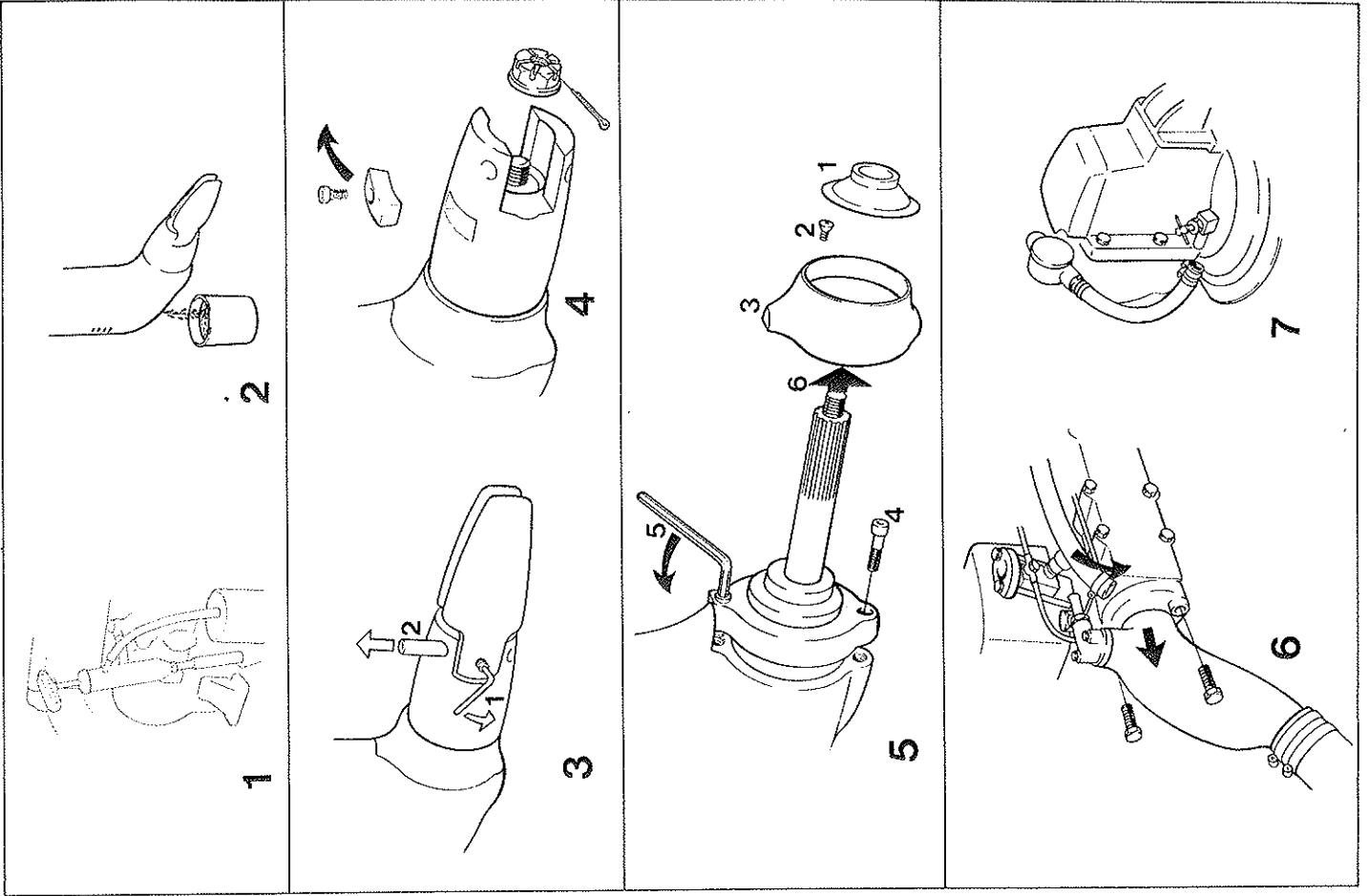
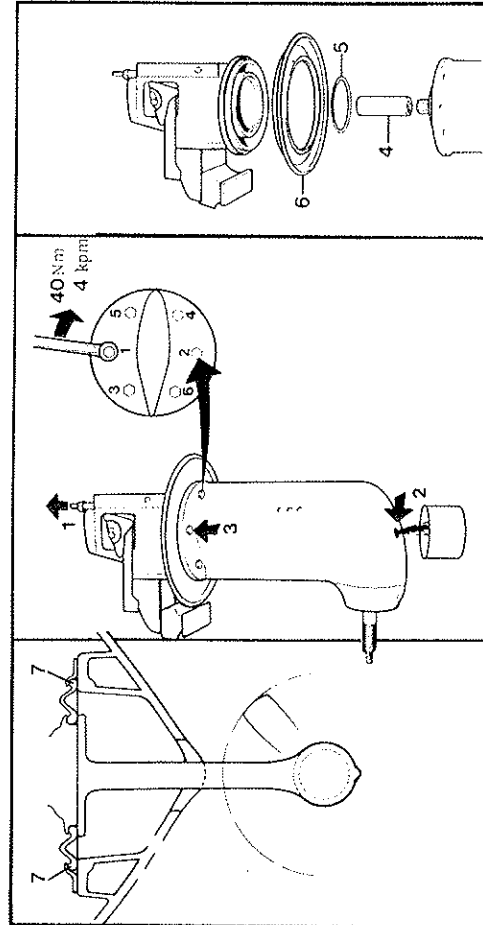


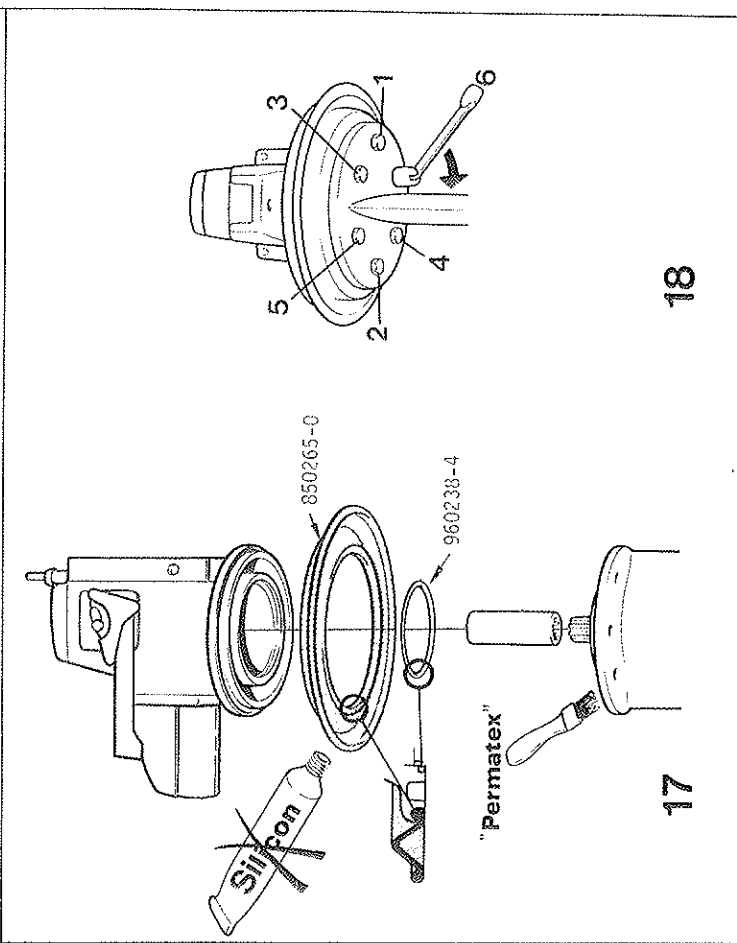
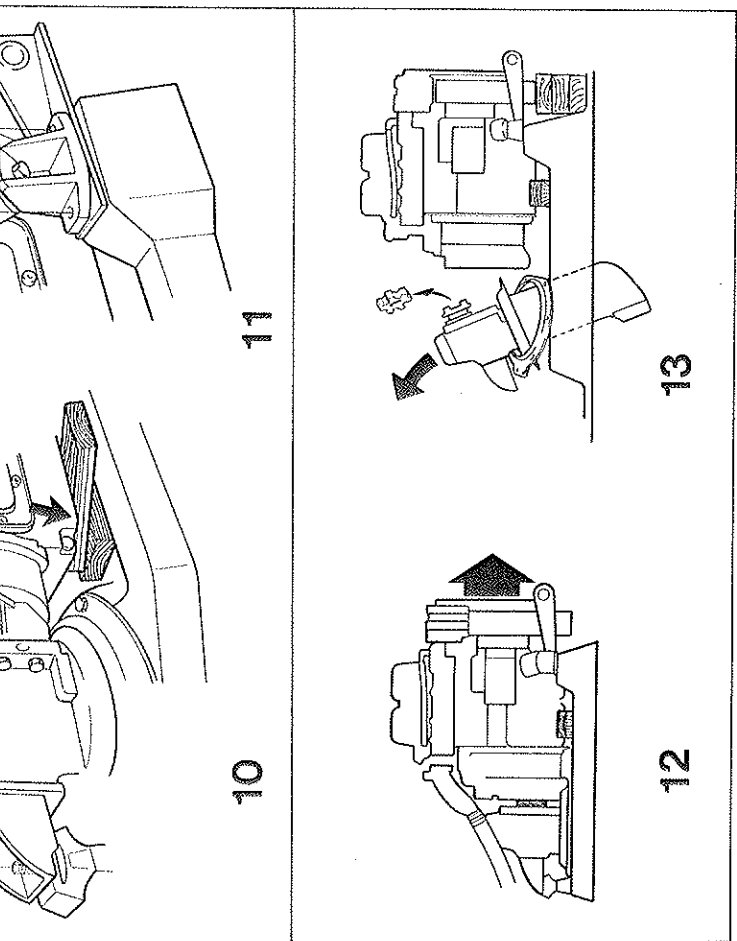
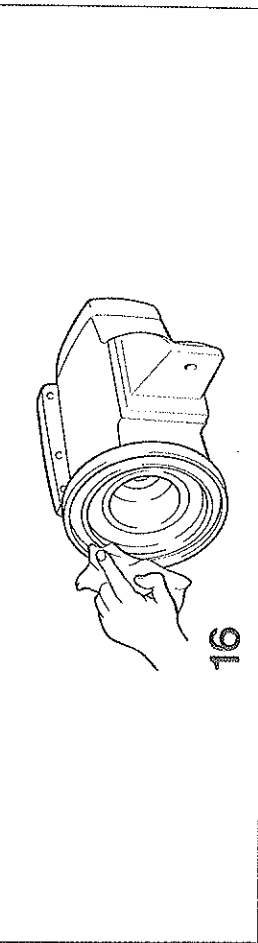
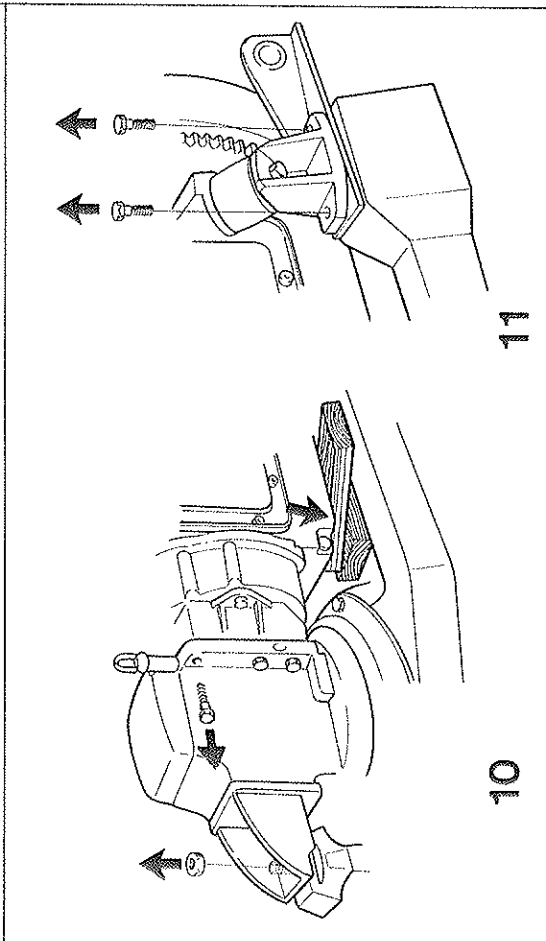
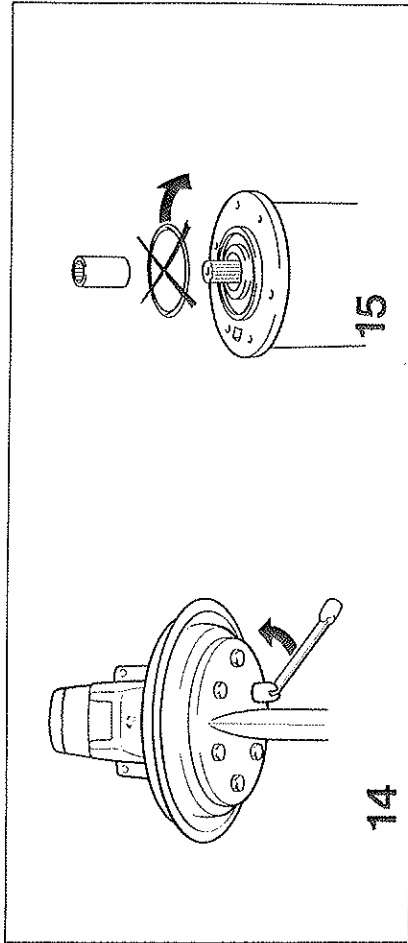
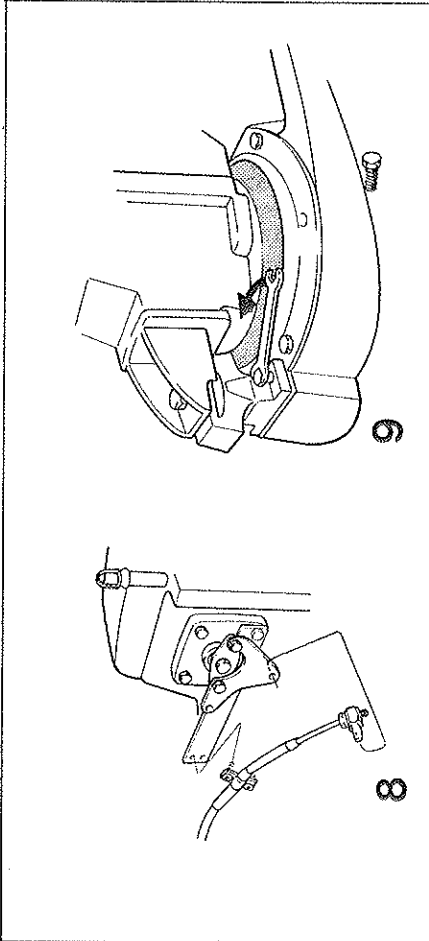
VOLVO PENTA

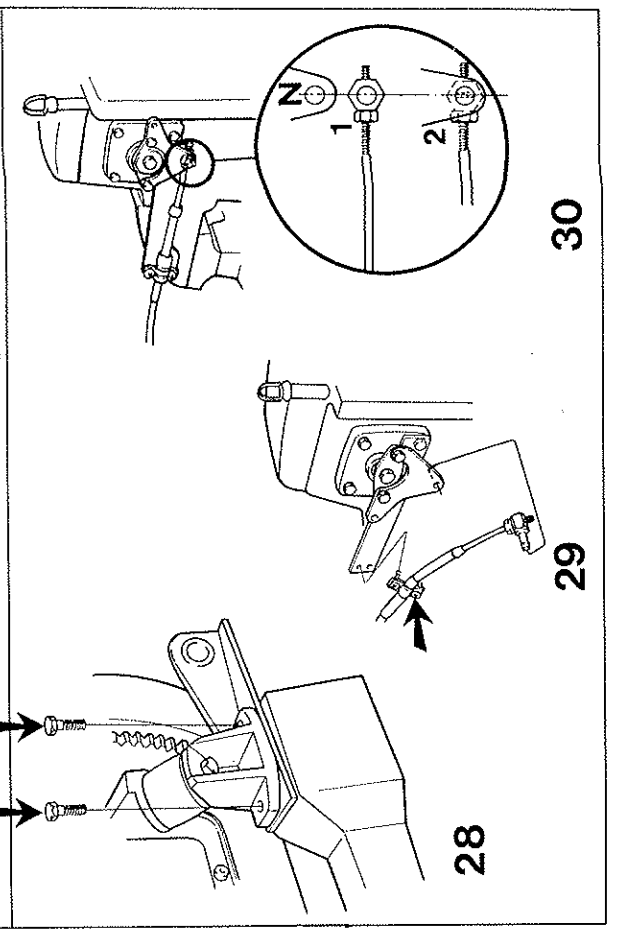
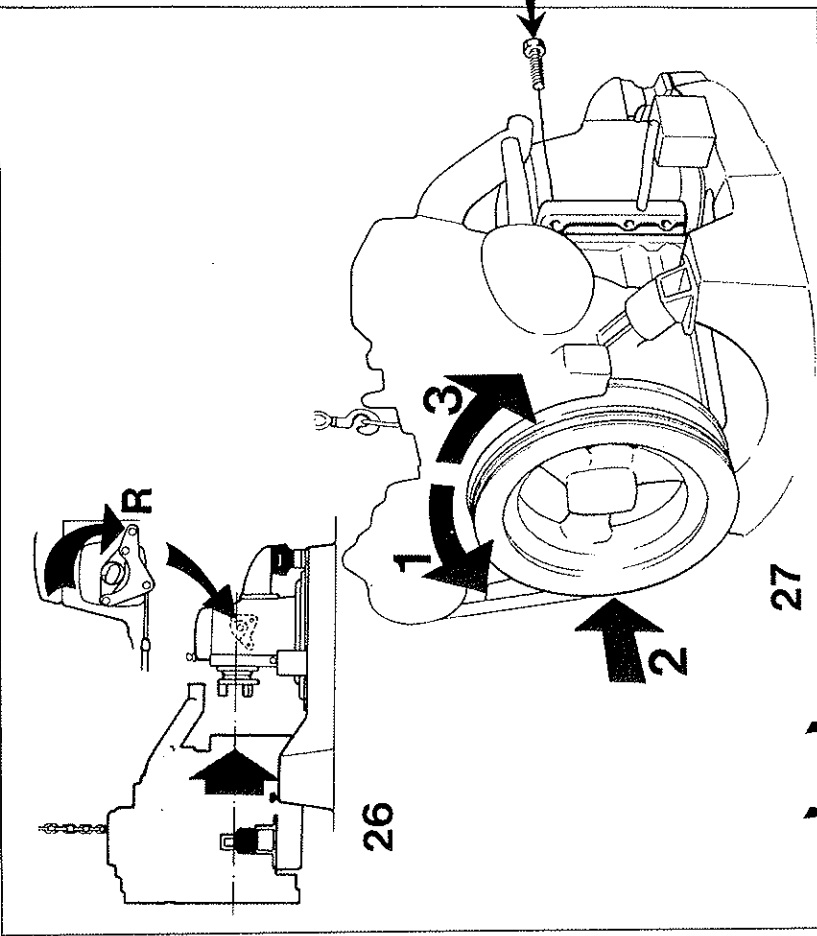
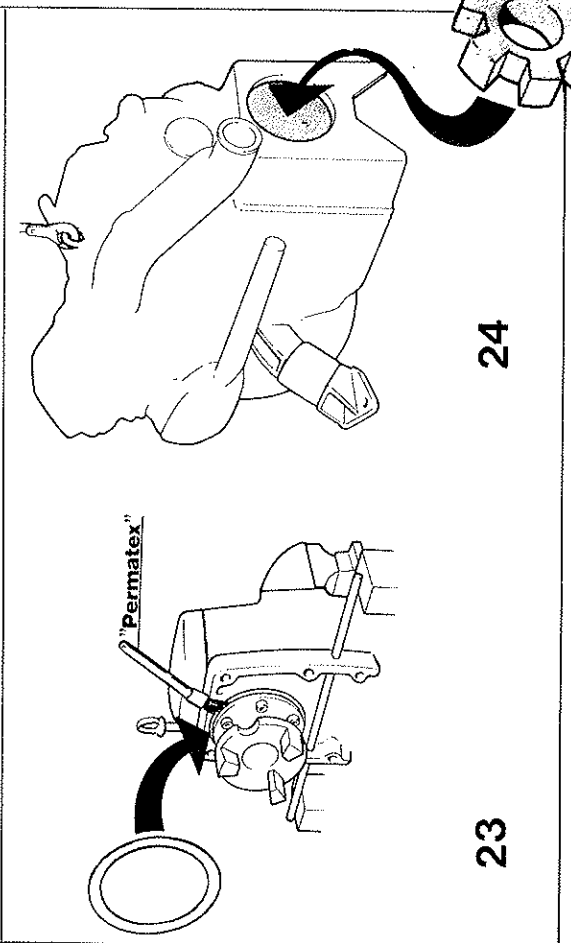
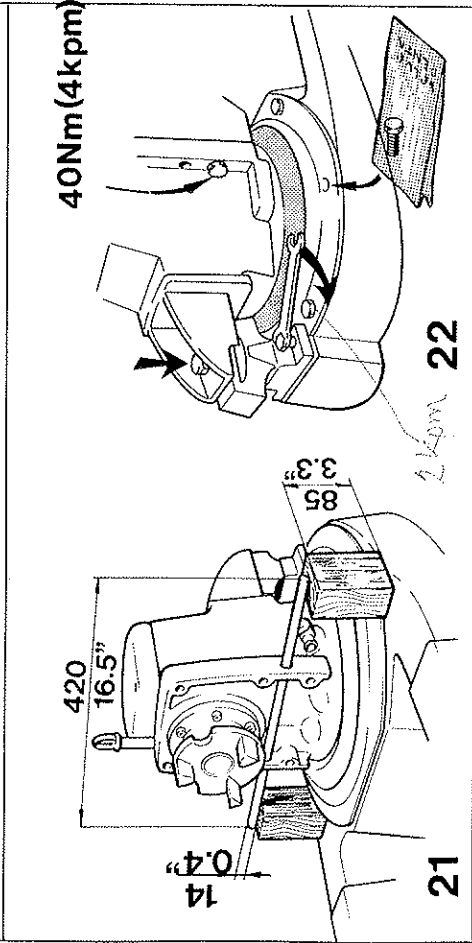
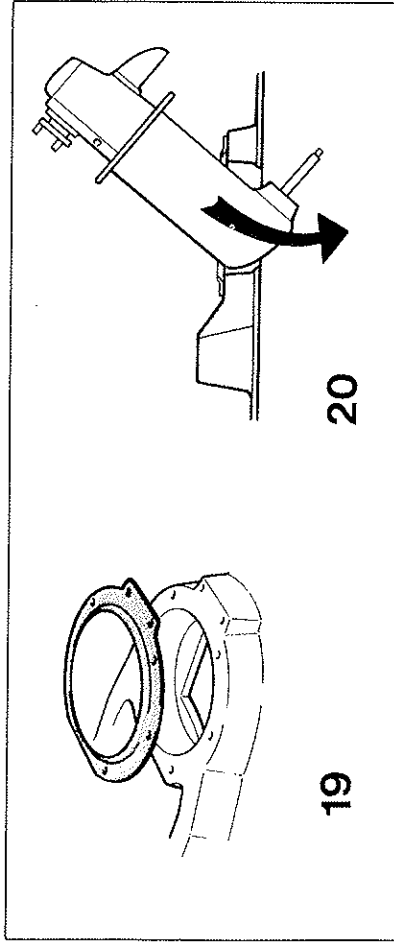
Publ no 3142A
Part no 850266
6-1980

ASSEMBLY INSTRUCTIONS FOR RUBBER SEAL 110S SAILBOAT DRIVE.

1. Remove the oil dipstick (1) and the drain plug (2) and drain the oil from the drive. Unscrew the six screws (3) which hold the upper and lower gear housing together and split the drive. Take care of the spline sleeve (4).
2. Remove the O-ring (5) and rubber seal and carefully clean the dividing surface of the gear housing. Then place a new O-ring (5) on the lower gear housing and fit the new rubberseal (6). NOTE! The rubber seal is marked "UP". This side should be fitted facing the upper gear housing so that this marking can be read easily.
3. Fit the upper gear housing and tighten the six screws (3). Tightening torque 40 Nm (4 kpm).
4. Top up with oil. Refer to the instruction book for oil quantity and quality. Then fit the oil dipstick.
5. When fitting the rubber seal in the boat it is important to ensure that the outer bead (7) is well supported against the engine bed and the clamp ring grooves fit well over the bead. Then tighten the clamp ring by means of the six screws. Tightening torque 20 Nm (2 kpm). NOTE! Sealing compound of any kind is NOT to be used between the rubber ring and engine bed.

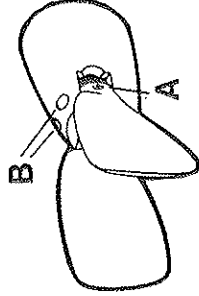






SERVICE INSTRUCTIONS FOR FOLDING PROPELLERS

1. Unscrew the lock screws(A). Use a hexagonal wrench part number 914672 (4 mm).
 2. Knock out the bearing pins (B).
 3. Scrape the bearing pins clean and carefully clean all the friction surfaces. Do not forget the bearing pin holes in the hub. Use emery cloth (fine abrasive cloth).
 4. Grease the cleaned parts with special Volvo Penta grease (part number 828250) and assemble the propeller.
- This greasing should be carried out when laying-up after every season.



SKÖTSELANVISNING FÖR FOLDINGPROPELLER

1. Skruva ur låsskruvarna (A). Använd sexkantnyckel (det. nr 914672, 4 mm).
2. Slå ur lagertapparna (B).
3. Rengör noga lagertapparna och alla friktionsytor. Glöm inte lagertapparnas hål i navet. Använd fin smörgelduk.
4. Smörj hål, tappor, kuggar och friktionsytor med Volvo Penta specialfett (det. nr 828250) och sätt ihop propellern.

Dessa åtgärder skall utföras vid båtupplägningen efter varje säsong.

WARTUNGSANLEITUNG FÜR FALTPROPELLER

1. Sicherungsschrauben (A) herausschrauben. Sechskantschlüssel Teil-Nr. 914672 (4 mm) verwenden.
 2. Lagerbolzen (B) herausschlagen.
 3. Lagerbolzen abkratzen und sorgfältig alle gleitenden Flächen säubern. Dabei nicht die Bohrungen für die Lagerbolzen in der Nabe vergessen. Hierbei kann ein feines Schmirgeltuch verwendet werden.
 4. Die gesäuberten Teile mit Volvo Penta Spezialfett (Teil-Nr. 828250) schmieren und den Propeller wieder zusammenbauen.
- Das Einfetten des Propellers soll beim Auflegen des Bootes nach jeder Saison erfolgen.

36	37	38
OIL QUALITY: CD (API)	US qts	dm ³
VISCOSITY:	MD 5 2.1	110 S 1.8
> +10° C	MD 7 3.0	1.9
< +10° C	MD 11 2.9	
	MD 17 4.5	
	4.8	